

SANTA MONICA

JEAN-MARIE MASSAUD (2011)



DESCRIPTION

An armchair with enveloping, comfortable silhouettes that features highly original styling thanks to the various upholstery options, adding a touch of casual chic.

Poliform

SANTA MONICA

JEAN-MARIE MASSAUD (2011)



TECHNICAL DESCRIPTION

TPOLOGY

armchair

STRUCTURE

flexible moulded polyurethane with elements in multi-density polyurethane foam

SEAT PADDING

double-density flexible polyurethane

FEET

plastic cylinder or rotating base

SEAT

flexible moulded polyurethane with elements in multi-density polyurethane foam

PRE-COVERING

parts in cotton cloth with inner side in feathers and parts in polyester padding

FINAL COVER

with not stretched removable slipcover in fabric. Stretched removable in fabric, not removable in leather

STITCH

double normal stitch. Drawstring stitch, thread in colours of sample book (covers in leather and velvet excluded)

TRIMS

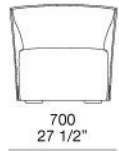
(only for slipcover) in colours as per sample book

Poliform

SANTA MONICA

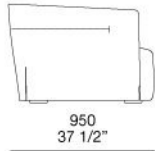
JEAN-MARIE MASSAUD (2011)

SMPL780



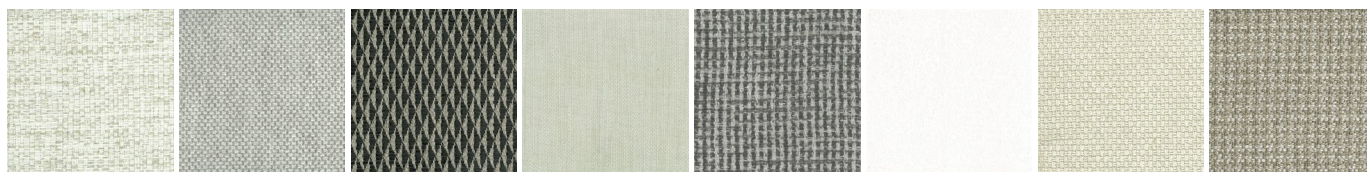
380
15"

640
25 1/4"



SANTA MONICA

FINISHINGS\COVER\FABRIC (35)



CHIOS

ARGO

CORINTO

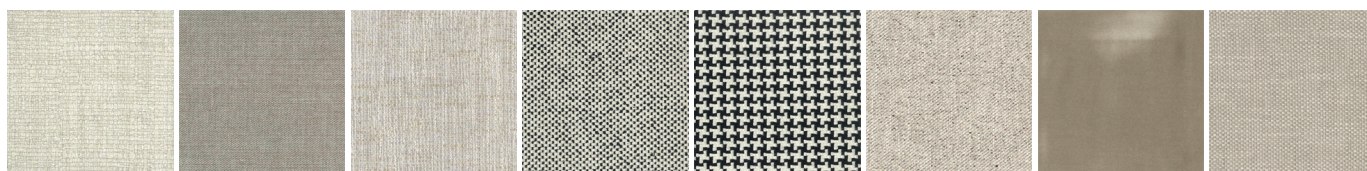
ITACA

MILOS

OLIMPIA

PAROS

ZANTE



SPARTA

SALFORD

ORLEANS

DERBY

LIMOGES

OXFORD

PERSIA

RABAT



MERIDA

HANNOVER

CORDOBA

CALEDONIA

NORWAY

ASPEN

ATLANTA

BERLINO



KYOTO

LIMA

MELBOURNE

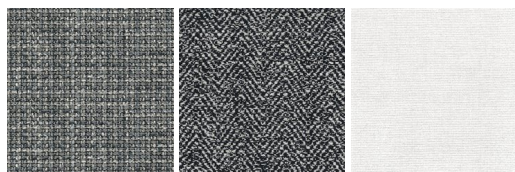
PORTO

REIMS

SAVANA

SIVIGLIA

INDRA - NEW



LIPSI - NEW

SKYROS -
NEW

NAXOS - NEW

SANTA MONICA

FINISHINGS\COVER\LEATHER (8)



NABUK
LEATHER

VINTAGE
LEATHER

SUPER
LEATHER

PELLE
SPECIAL

AGED-
LOOKING
LEATHER

COLORS
LEATHER

SPRING
LEATHER

SOFT
LEATHER

SANTA MONICA

FINISHINGS\STITCH\THREAD (8)



RUBINO 105

PERLA 411

TEMPESTA
764

NAVY 821

BURRO 1000

SAHARA 1185

ACCIAIO 1282

NERO 4000

SANTA MONICA

FINISHINGS\TRIMS\TRIMS (8)



36 BURRO

41 NERO

42 ACCIAIO

45 PERLA

50 SAHARA

85 RUBINO

117 NAVY

141
TEMPESTA