

SANTA MONICA LOUNGE

JEAN-MARIE MASSAUD (2012)



DESCRIPTION

A very enveloping and comfortable armchair, which finds its singularity in the seasonal coverings. Its style is casual and chic; casual for its comfort and unformal character and chic for the wide range of coverings recalling Poliform's universe. Santa Monica is a "mix and match" of fabric, cushions and accessories.

Poliform

SANTA MONICA LOUNGE

JEAN-MARIE MASSAUD (2012)



TECHNICAL DESCRIPTION

TYPOLOGY

armchair

STRUCTURE

double-density polyurethane foam

Seat padding

double-density flexible polyurethane

SEAT

flexible moulded polyurethane with elements in double-density polyurethane foam

FEET

plastic cylinder or rotating base

PRE-COVER

parts in cotton cloth with inner side in feathers and parts in polyester padding

FINAL COVER

with not stretched removable slipcover in fabric. Stretched removable in fabric, not removable in leather

STITCH

double normal stitch. Drawstring stitch, thread in different colours (covers in leather and velvet excluded)

TRIMS

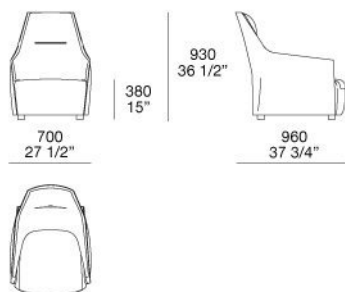
grosgrain in different colours

Poliform

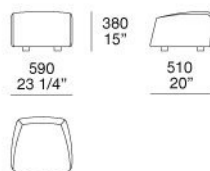
SANTA MONICA LOUNGE

JEAN-MARIE MASSAUD (2012)

SMPL700

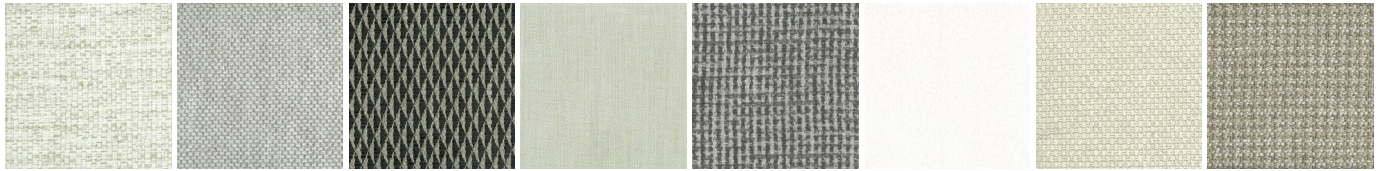


SMPO059



SANTA MONICA LOUNGE

FINISHINGS\COVER\FABRIC (35)



CHIOS

ARGO

CORINTO

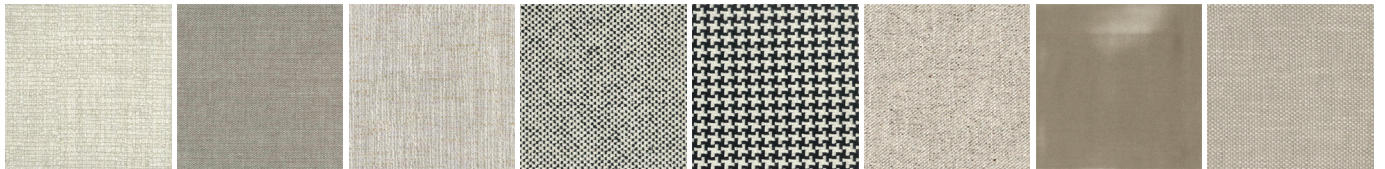
ITACA

MILOS

OLIMPIA

PAROS

ZANTE



SPARTA

SALFORD

ORLEANS

DERBY

LIMOGES

OXFORD

PERSIA

RABAT



MERIDA

HANNOVER

CORDOBA

CALEDONIA

NORWAY

ASPEN

ATLANTA

BERLINO



KYOTO

LIMA

MELBOURNE

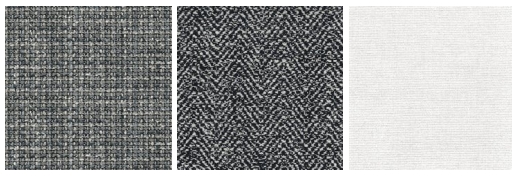
PORTO

REIMS

SAVANA

SIVIGLIA

INDRA - NEW



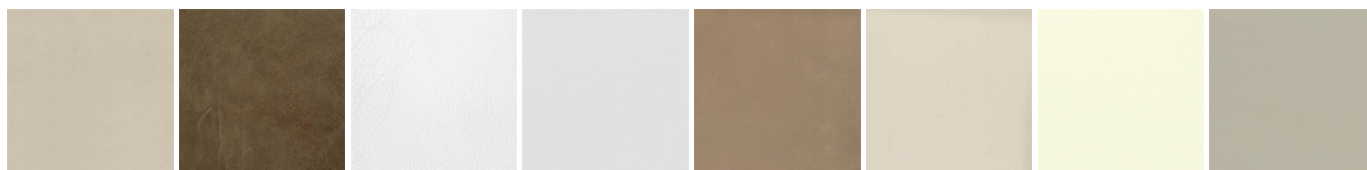
LIPSI - NEW

SKYROS -
NEW

NAXOS - NEW

SANTA MONICA LOUNGE

FINISHINGS\COVER\LEATHER (8)



NABUK
LEATHER

VINTAGE
LEATHER

SUPER
LEATHER

PELLE
SPECIAL

AGED-
LOOKING
LEATHER

COLORS
LEATHER

SPRING
LEATHER

SOFT
LEATHER

SANTA MONICA LOUNGE

FINISHINGS\STITCH\THREAD (8)



RUBINO 105

PERLA 411

TEMPESTA
764

NAVY 821

BURRO 1000

SAHARA 1185

ACCIAIO 1282

NERO 4000

SANTA MONICA LOUNGE

FINISHINGS\TRIMS\TRIMS (8)



36 BURRO

41 NERO

42 ACCIAIO

45 PERLA

50 SAHARA

85 RUBINO

117 NAVY

141
TEMPESTA