

# TREVI

ROBERTO BARBIERI (2005)



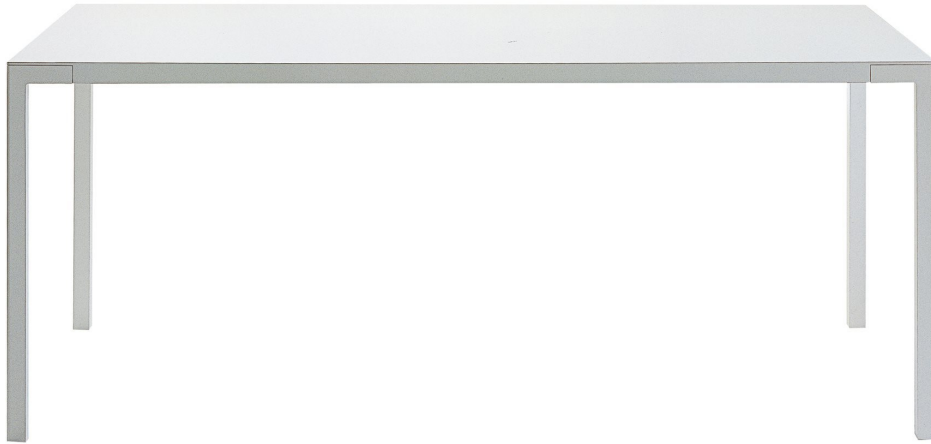
## DESCRIPTION

A collection of tables characterized by ephemeral thickness designed by Roberto Barbieri

**Poliform**

# TREVI

ROBERTO BARBIERI (2005)



## TECHNICAL DESCRIPTION

### TPOLOGY

fixed table

### LEGS

painted aluminium

### TOP

honeycomb panel faced with mat lacquered colours

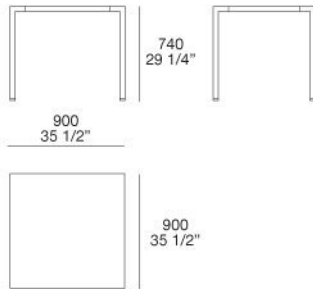
### Features

available with non-scratch painting

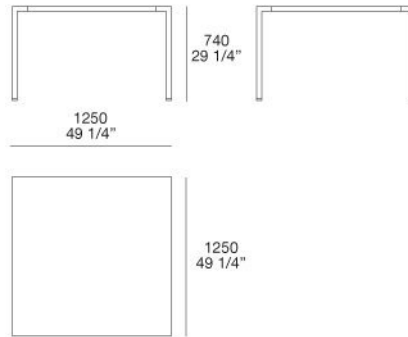
# TREVI

ROBERTO BARBIERI (2005)

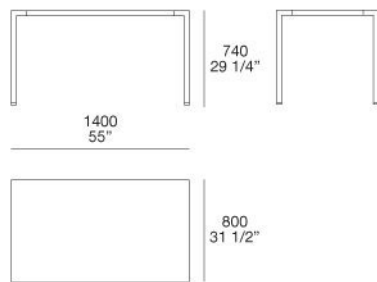
**TTR90**



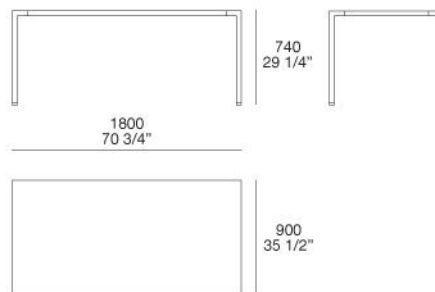
**TTR125**



**TTR140**



**TTR180**



# TREVI

FINISHINGS\TOP\MAT LACQUERED COLOURS (27)



42 PANNA

35 CANAPA

26 CORDA

88 CASTORO

64 ARENA

46 TORTORA

48 VISONE

49 MOKA



61 QUARZO

62 CRETA

78 FERRO

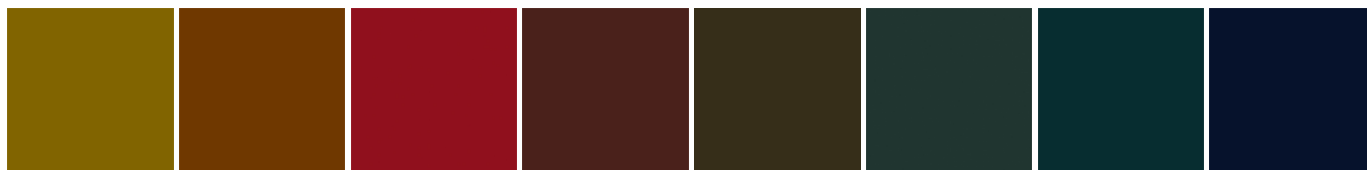
04 GRAFITE

60 GHIACCIO

09 PIOGGIA

89 ROCCIA

90 PIOMBO



83 OCRA

85  
CARMELLO

72 CILIEGIA

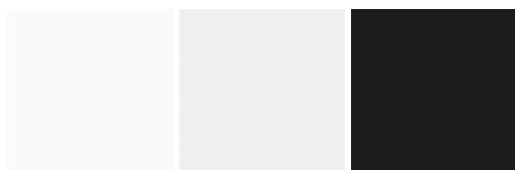
87 GRANATA

92 VISCHIO

67 MUSCHIO

86 DANUBIO

70 PRUSSIA



82 GLACIER-  
WHITE

01 BIANCO

91 CARBONE

# TREVI

FINISHINGS\TOP\NON-SCRATCH 4 MAT LACQUERED COLOURS (4)



01 BIANCO

35 CANAPA

04 GRAFITE

91 CARBONE

# TREVI

FINISHINGS\STRUCTURE\NON-SCRATCH 4 MAT LACQUERED COLOURS (4)



01 BIANCO

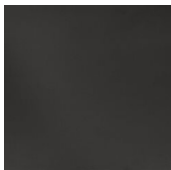
35 CANAPA

04 GRAFITE

91 CARBONE

# TREVI

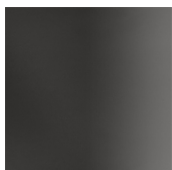
FINISHINGS\STRUCTURE\ BROWN NICKEL MAT PAINTED (1)



BROWN  
NICKEL MAT  
PAINTED

# TREVI

FINISHINGS\STRUCTURE\GLOSSY PAINTEDBROWN NICKEL (1)



GLOSSY  
PAINTEDBRO  
WN NICKEL

# TREVI

FINISHINGS\STRUCTURE\ALUMINIUM MAT LACQUERED COLOURS (28)



42 PANNA

35 CANAPA

26 CORDA

88 CASTORO

64 ARENA

46 TORTORA

48 VISIONE

49 MOKA



61 QUARZO

62 CRETA

78 FERRO

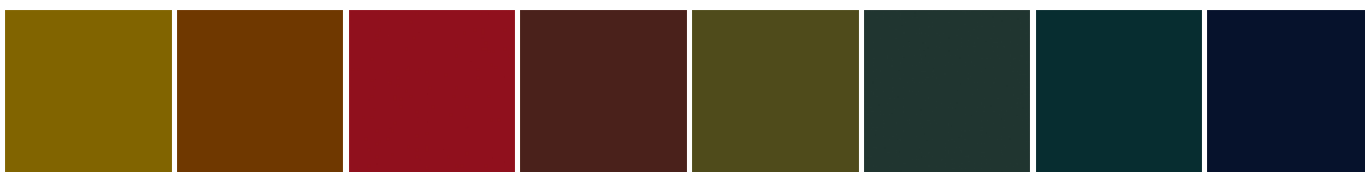
04 GRAFITE

60 GHIACCIO

09 PIOGGIA

89 ROCCIA

90 PIOMBO



83 OCRA

85  
CARMELLO

72 CILIEGIA

87 GRANATA

84  
PISTACCHIO

67 MUSCHIO

86 DANUBIO

70 PRUSSIA



82 GLACIER-  
WHITE

01 BIANCO

91 CARBONE