

# JANE LARGE

EMMANUEL GALLINA (2018)



## DESCRIPTION

The Jane collection by Emmanuel Gallina is embellished with new components with the aim of providing even more comfort. A diversified range of armchairs, poufs and benches that envisage increasingly welcoming dimensions and silhouettes. Jane Large is a generously proportioned armchair. Distinguished by a low backrest, it maximises the softness of the volumes and suggests an immediate sense of comfort.

**Poliform**

# JANE LARGE

EMMANUEL GALLINA (2018)



## TECHNICAL DESCRIPTION

### Typology

Armchair

### Base

Solid wood

### Structure

Moulded flexible polyurethane, with parts in flexible multi-density polyurethane

### Pre-cover

Polyester padding, feather and cotton cloth

### Final cover

Removable in fabric - not removable in leather

**Poliform**

# JANE LARGE

EMMANUEL GALLINA (2018)

**JNPL074N**  
**JNPL074**



740  
29 1/4"



800  
31 1/2"



850  
33 1/2"

410  
16 1/4"

**JNPO071**



710  
28"



410  
16 1/4"



560  
22"

# JANE LARGE

FINISHINGS\BASE\WOODS (3)



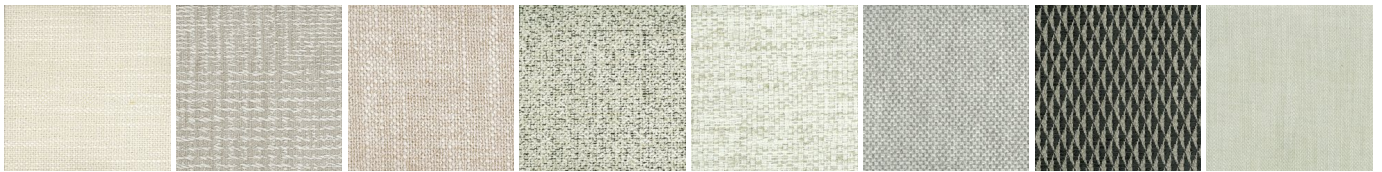
SPESSART  
OAK

WALNUT  
GOLD

BLACK ELM

# JANE LARGE

FINISHINGS\SEAT AND BACKREST\FABRIC (39)



KUSHIRO

SENDAI

NAYORO

KITAMI

CHIOS

ARGO

CORINTO

ITACA



MILOS

OLIMPIA

PAROS

ZANTE

SPARTA

ORLEANS

OXFORD

PERSIA



RABAT

HANNOVER

CORDOBA

CALEDONIA

ASPEN

ATLANTA

LIMA

SIVIGLIA





INDRA

LIPSI

CALEO

SKYROS

ERACLEA

NAXOS

ANTEA

MICENE



ARCADIA

LERO

SIRO

AGADIR

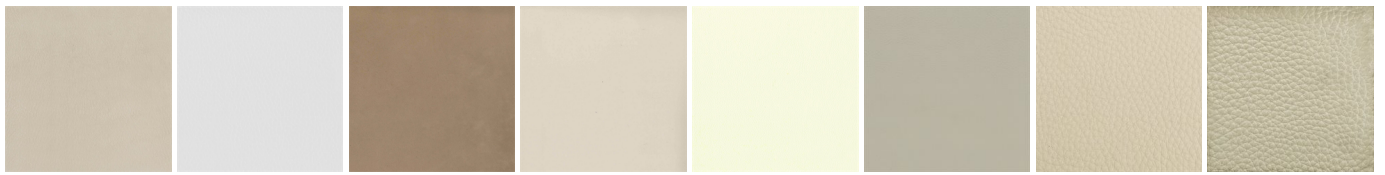
BREST

GLASGOW

NANCY

# JANE LARGE

FINISHINGS\SEAT AND BACKREST\LEATHER (8)



NABUK  
LEATHER

PELLE  
SPECIAL

AGED-  
LOOKING  
LEATHER

COLORS  
LEATHER

SPRING  
LEATHER

SOFT  
LEATHER

LEATHER  
SILK

DEEP